

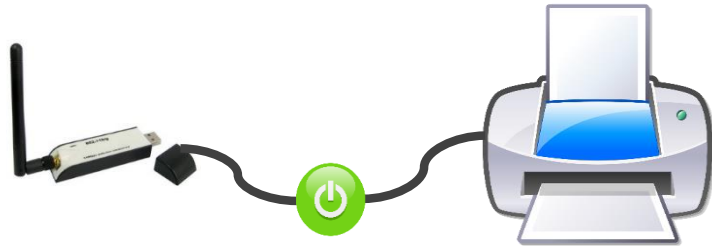
BASIC OPERATING PROCEDURE / OPERASI ASAS

1.



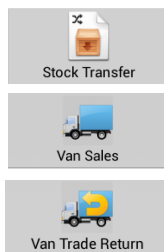
Turn on Wi-Fi Hotspot on mobile tab
Buka Wi-Fi Hotspot di tablet.

2.



Turn on power of the printer and print server.
Buka printer dan print server.

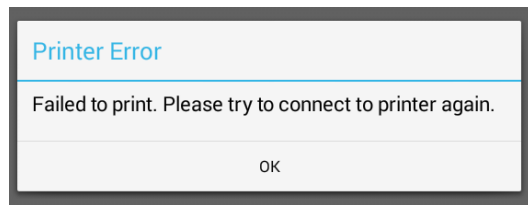
3.



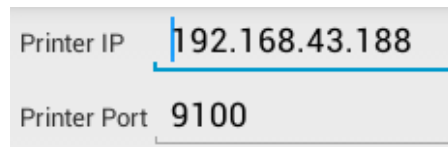
Start the SSC Van Sales order.
Mulakan order dengan SSC Van Sales.

TROUBLESHOOTING/PENYELESAIAN MASALAH 1

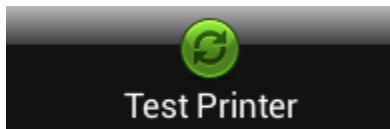
1. Screen appear failed message
Skrin memaparkan mesej Gagal.



2. Make sure the Printer IP and Printer Port as follows:
Pastikan Printer IP dan Printer Port seperti berikut:



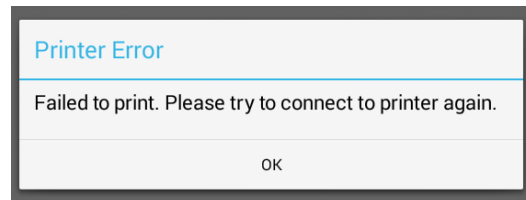
- 3.



Try TEST PRINTER again
Tekan TEST PRINTER sekali lagi.

TROUBLESHOOTING/PENYELESAIAN MASALAH 2

1. Screen appear failed message.
Skrin memaparkan mesej Gagal.



2.



Turn off power of the printer and print server.
Tutup printer dan print server.

3.



Turn on the power of printer and print server again.
Buka sekali lagi printer dan print server.

4.



Wait for few seconds.
Tunggu beberapa saat.

5.



Try TEST PRINTER again
Tekan TEST PRINTER sekali lagi.